

INSTRUCTIONS FOR INSTALLING A TRAY SUPPORT ROLLER AND STUD REPLACEMENT KIT IN A NATIONAL VENDORS[®], CROWN SEVENTY TWO[®], GG-424 GRAND GOURMET FOOD MERCHANDISER

CHECK THE PARTS RECEIVED IN THE KIT WITH THE PARTS LIST IN THESE INSTRUCTIONS. FIGURE 1 SHOWS ALL THE PARTS IN THE KIT. IF ANY PARTS ARE MISSING, CONTACT NATIONAL VENDORS' PARTS DEPARTMENT IMMEDIATELY.

These instructions cover the procedure for installing a Tray Support Roller and Stud Replacement Kit in a Crown Seventy Two, GG-424 Grand Gourmet Food Merchandiser.

Read these instruction carefully and thoroughly before installing the Kit. Retain these instructions for part number and installation information.

Kit, Part Number, 424-1269, contains the following parts:

Part Number	Description	Quantity
424-1265	Roller Support Bar Assembly	3
424-1270	Installation Instructions	1
424-0020	Tray Support Roller and Stud Replacement Kit Packaged Parts consists of the following:	1
404-1107	No.8-18 x 1-1/2 RHS S/T Screw	4
404-7054	No.8-18 x 1/2 RHS T/C Screw	2
424-1074	Upper Left Tray Roller	2
424-1086	Upper Right Tray Roller	2
424-1264	Hexagonal Head Stud	12
9900-157	No.8-32 x 7/32 Hex. W/Hd. S/T Screw	3
	* * *	

Special Tools Required:
1/8" Allen Head Wrench

TO INSTALL THE KIT

A. PARTS REMOVAL

1. Unlock and open the Monetary Compartment.
2. Fully open the Display Door.
3. Remove all four Food Trays from the Merchandiser.

WARNING

If it is necessary to check the Merchandiser with power ON and the Door or Monetary Compartment Interlock Switch either depressed or pulled out, keep clear of elevator and wiring to avoid injury and electrical shock.

4. Pull out both the Monetary Compartment and Display Door Interlock Switches.
5. Press one Selection Button in the topmost, "A" Row of the Selection Assembly.
6. When the Elevator Tray comes to a stop, immediately move the Main Switch to the OFF position.
7. With the Elevator Tray raised, remove the four Screws which attach the Movable Panel Assembly to the two Elevator Guides. See Figure 2.
8. Remove the Movable Panel Assembly. See Figure 2.
9. Remove eleven Screws and the Heat Exchanger Front Cover. See Figure 2.
10. Move the Main Switch to the ON position, allowing the Elevator Tray to move downward to the "Home" position.

CAUTION

Before moving the Main Switch to the OFF position, allow the Merchandiser to complete the entire Vend Cycle.

11. Return the Main Switch to the OFF position.
12. Remove six Screws and the Heat Exchanger Top Cover from the Merchandiser. See Figure 2.



NO.8-32 x 7/32 HEX.
W HD. SCREW S/T
9900 157(3)



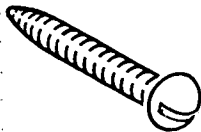
UPPER LEFT
TRAY ROLLER
424 1074(2)



NO.8-18 x 1/2 R.H.S.
T/C 404 7054(2)



UPPER RIGHT
TRAY ROLLER
424 1086(2)



NO.8-18 x 1 1/2 R.H.S.
S/T 404 1107 (4)



HEXAGONAL HEAD
STUD 424 1264(12)



ROLLER SUPPORT
BAR ASSEMBLY
424 1265(3)

FIGURE 1

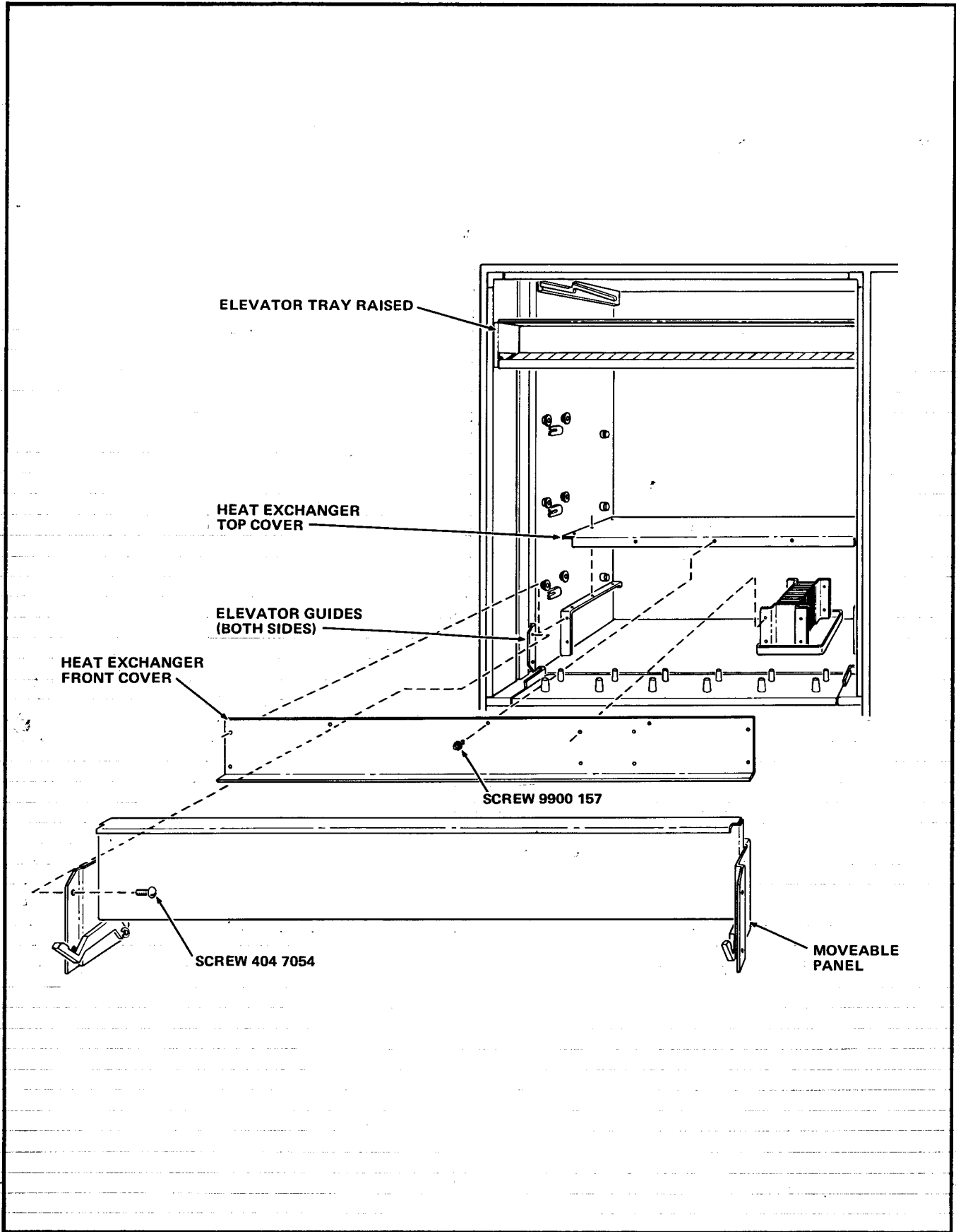


FIGURE 2

1.1.3. 4/14/2000/10/10

NOTE

If the Tray Roller to be replaced is located on the Left Tray Support Assembly, follow Steps A-13 through A-20.

13. Remove four Screws attaching the Blower Duct Assembly to the Left Tray Support Assembly. See Figure 3.
14. Remove four Screws and the Blower Housing Inlet from the Blower Housing. See Figure 3.
15. Using a 1/8" Allen Head Wrench, loosen the attaching Set Screw and remove the Blower Wheel from the Blower Motor Shaft. See Figure 3.
16. Remove three Screws and the Blower Housing and Duct Assembly from the Merchandiser. See Figure 3.
17. Remove the eleven Screws attaching the Left Tray Support Assembly to the Cabinet Wall. See Figure 3.
18. Lift the Left Tray Support Assembly away from the Cabinet Wall and out of the Merchandiser.
19. Place the Left Tray Support Assembly on a level surface.

20. Remove twelve Nuts, twelve Round Head Studs and the eight Upper Left Tray Rollers and four Lower Tray Rollers from the Left Tray Support Assembly. Discard the twelve Nuts and Round Head Studs. See Figure 4.

NOTE

If the Tray Roller to be replaced is located on the Right Tray Support Assembly, follow Steps A-21 through A-28.

21. Remove the Thumbnut, Tray Drive Gear and Driveshaft Spacers, all located on the Left Wall inside the Monetary Compartment, from each of the four Cabinet Driveshaft Assemblies. See Figure 5.

CAUTION

A Cabinet Driveshaft Assembly may have more than one Driveshaft Spacer attached. Be sure to keep each of the Driveshaft Spacers with the same Cabinet Driveshaft Assembly from which it was removed.

22. Pull the four Cabinet Driveshaft Assemblies out of the Merchandiser. See Figure 5.

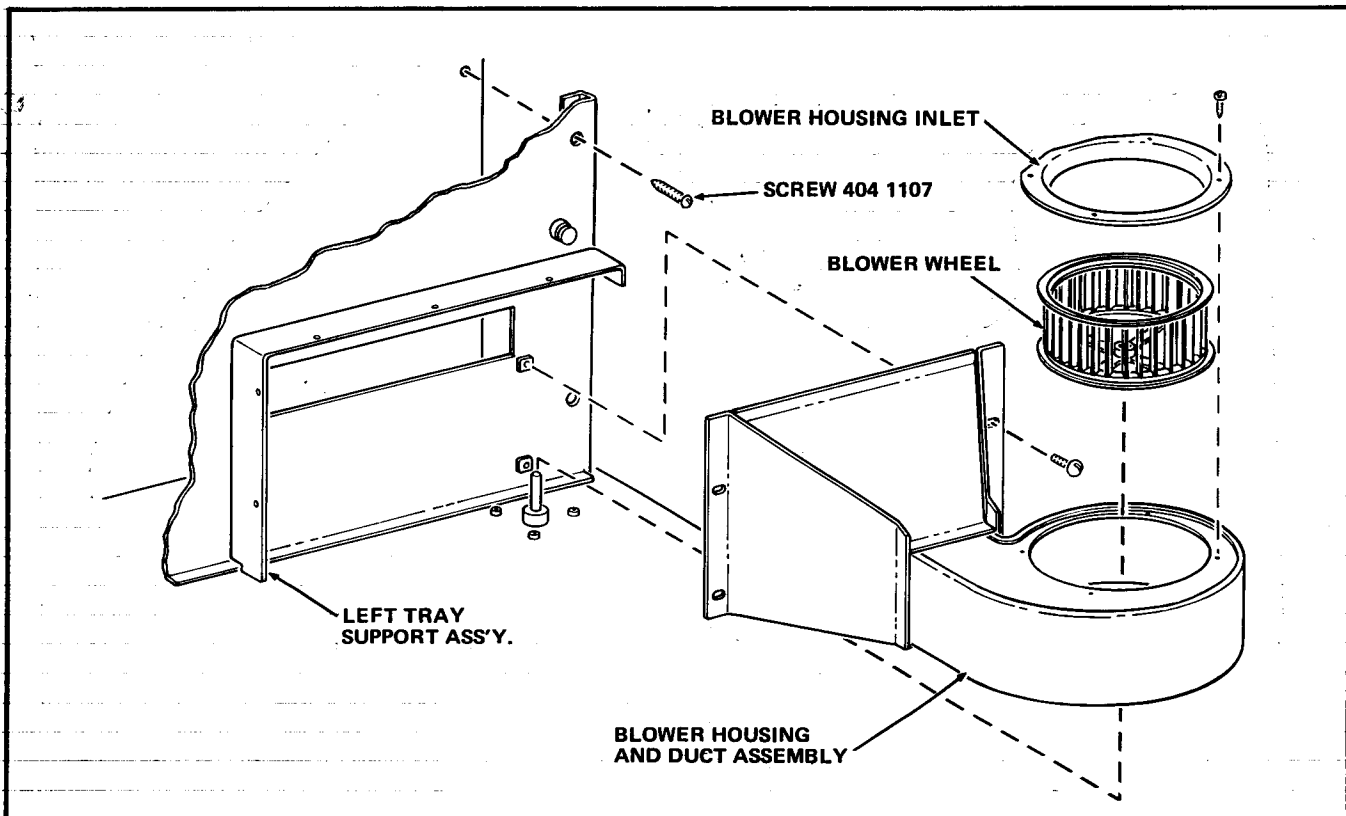


FIGURE 3

R | L

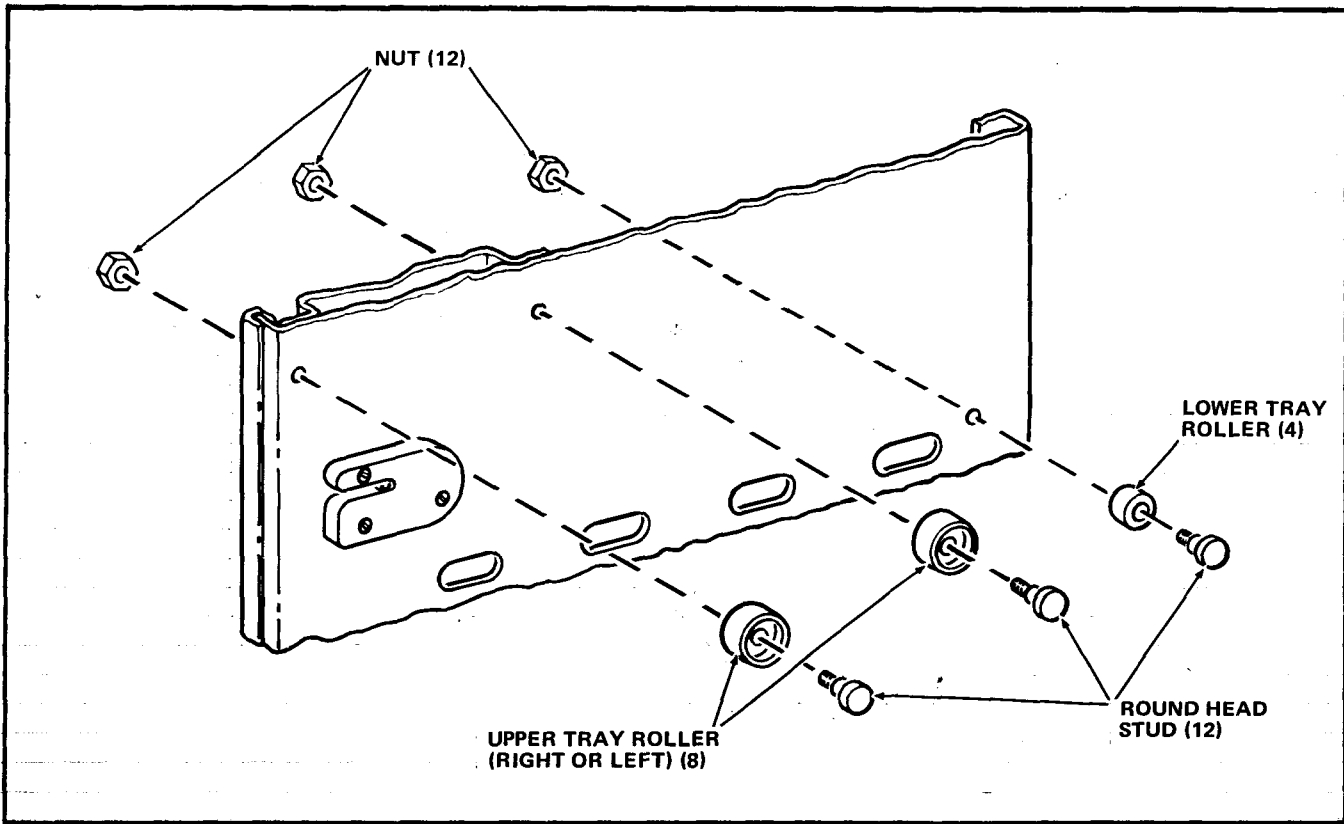


FIGURE 4

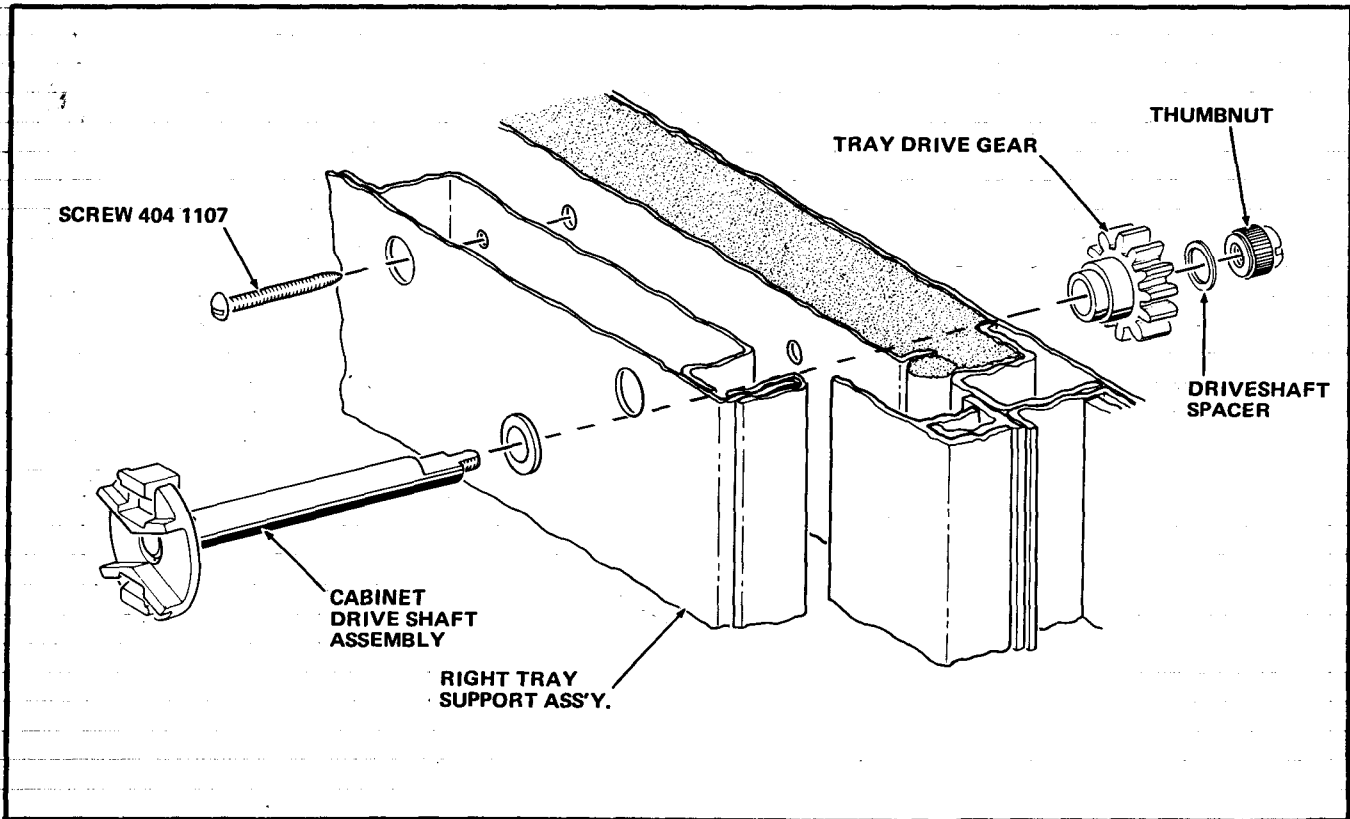


FIGURE 5

23. Remove the Health Control Plug and pull the Health Control Bulb out of the Tube in the Right Tray Support Assembly. See Figure 6.
24. Remove the eleven Screws attaching the Right Tray Support Assembly to the Cabinet Wall. See Figure 5.
25. Lift the Right Tray Support Assembly away from the Cabinet Wall and out of the Merchandiser.
26. Place the Right Tray Support Assembly on a level surface.
27. Remove twelve Nuts, twelve Round Head Studs and the eight Upper Right Tray Rollers and four Lower Tray Rollers from the Right Tray Support Assembly. Discard the twelve Nuts and Round Head Studs. See Figure 4.

B. INSTALLATION OF THE KIT

NOTE

If the Tray Roller to be replaced is located on the Left Tray Support Assembly, follow Steps B-1 through B-8.

1. Position two of the Roller Support Bar Assemblies, Part Number 424-1265, included in the Kit, against the Left Tray Support Assembly so that the four Weld Nuts on the Roller Support Bar Assembly are aligned with the holes in the Tray Support and Tray Support Bracket. See Figure 7.
2. Holding the Roller Support Bar Assembly in place, reinstall the Upper Left Tray Rollers, removed in Step A-20, attaching with the Hexagonal Head Stud, Part Number 424-1264, included in the Kit, and replacing the defective Upper Left Tray Tray Roller with one of the Upper Left Tray Rollers, Part Number 424-1074, included in the Kit. See Figure 7.
3. Using the remaining Roller Support Bar Assembly and Hexagonal Head Studs, reinstall the four Lower Tray Rollers, removed in Step A-20. See Figure 7.
4. Install the Left Tray Support Assembly in the Merchandiser, using the eleven Screws removed in Step A-17. Four of these Screws, Part Number 404-1107, are included in the Kit. See Figure 3.

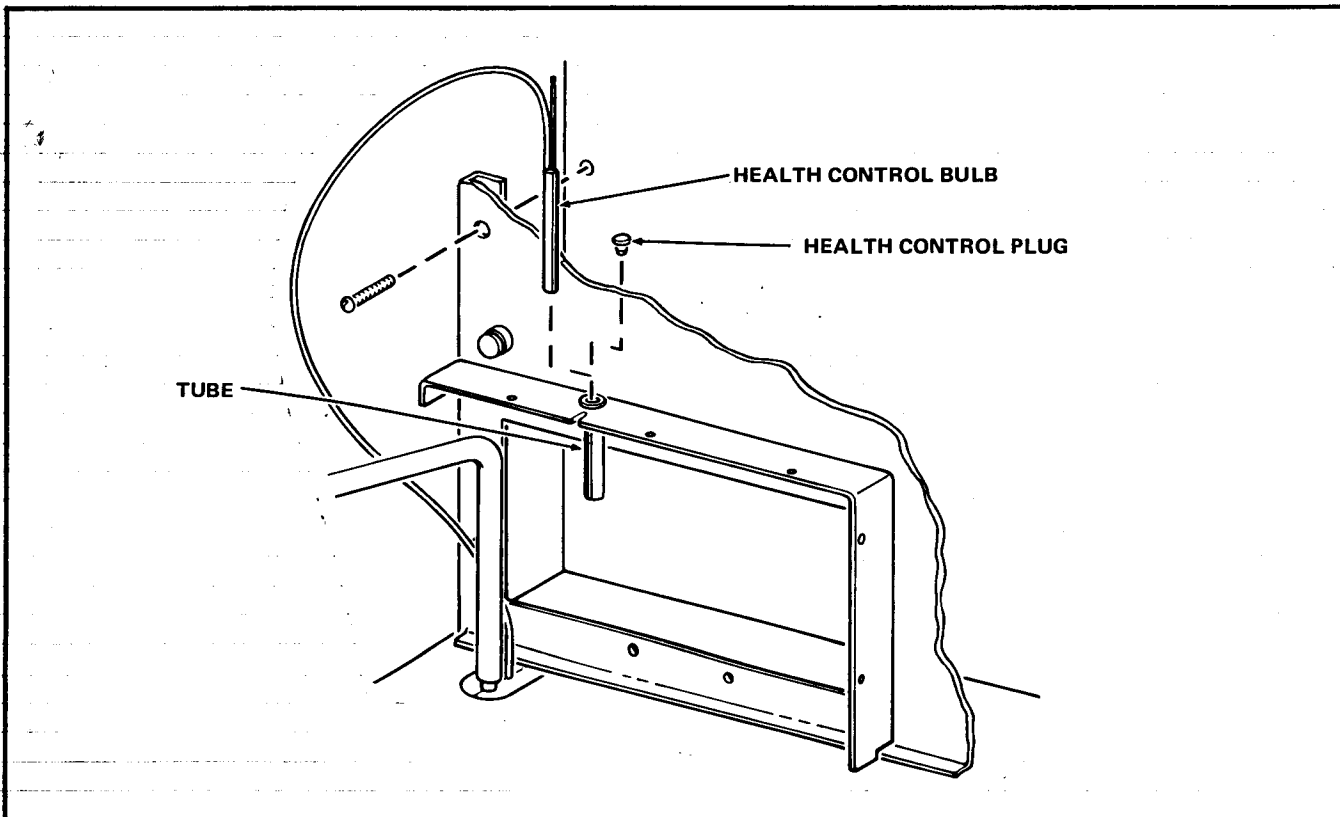


FIGURE 6

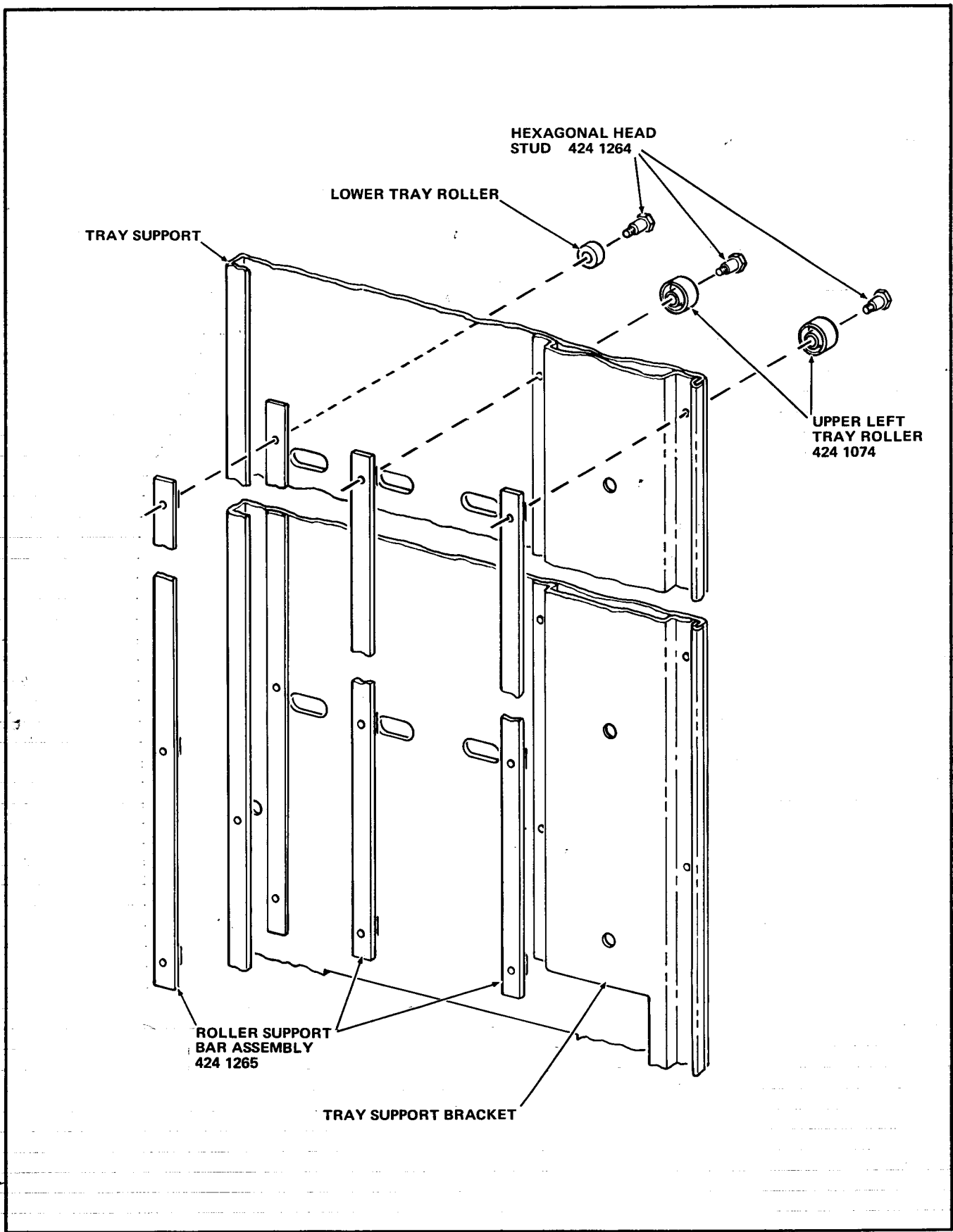


FIGURE 7

1.875 in. (47.6 mm)

CAUTION

When installing the Left Tray Support Assembly, make sure that the Tray Support Foot is properly positioned beneath the Left Tray Support Assembly and that the Tray Lock Bar is resting on top of the Upper Tray Lock Rod.

5. Install three Screws and the Blower Housing and Duct Assembly, removed in Step A-16. See Figure 3.
6. Using a 1/8" Allen Head Wrench, install the Blower Wheel, removed in Step A-15. See Figure 3.
7. Install four Screws and the Blower Housing Inlet, removed in Step A-14. See Figure 3.
8. Install the four Screws, removed in Step A-13, attaching the Blower Duct Assembly to the Left Tray Support Assembly. See Figure 3.

NOTE

If the Tray Roller to be replaced is located on the Right Tray Support Assembly, follow Steps B-9 through B-16.

9. Position two of the Roller Support Bar Assemblies, Part Number 424-1265, included in the Kit, against the Right Tray Support Assembly so that the four Weld Nuts on the Roller Support Bar Assembly are aligned with the holes in the Tray Support and Tray Support Bracket. See Figure 8.
10. Holding the Roller Support Bar Assembly in place, reinstall the Upper Right Tray Rollers, removed in Step A-27, attaching with the Hexagonal Head Stud, Part Number 424-1264, included in the Kit, and replacing the defective Upper Right Tray Roller with one of the Upper Right Tray Rollers, Part Number 424-1086, included in the Kit. See Figure 8.
11. Using the remaining Roller Support Bar Assembly and Hexagonal Head Studs, reinstall the four Lower Tray Rollers, removed in Step A-27. See Figure 8.
12. Install the Right Tray Support Assembly in the Merchandiser using the eleven Screws removed in Step A-24. Four of these Screw, Part Number, 404-1107, are included in the Kit. See Figure 5.

CAUTION

When installing the Right Tray Support Assembly, make sure that the Tray Support Foot is properly positioned beneath the Right Tray Support Assembly.

13. Install the Health Control Plug and Health Control Bulb, removed in Step A-23, into the Tube in the Right Tray Support Assembly. See Figure 6.
14. Install the four Cabinet Driveshaft Assemblies, removed in Step A-22, into the Merchandiser. See Figure 5.
15. Attach the Thumbnuts, Tray Drive Gears and Driveshaft Spacers, removed in Step A-21, to the four Cabinet Driveshaft Assemblies. See Figure 5.

CAUTION

When installing the four Cabinet Driveshaft Assemblies, attach to each one of the Cabinet Driveshaft Assemblies the same number of Driveshaft Spacers removed in Step A-21 and position the four Cabinet Driveshaft Assemblies so that the Channels in the Driveshaft Couplings are in the horizontal position.

16. Install six Screws and the Heat Exchanger Top Cover, removed in Step A-12. Three of these Screws, Part Number, 9900-157, are included in the Kit. See Figure 2.

WARNING

If it is necessary to check the Merchandiser with power ON and the Door or Monetary Compartment Interlock Switch either depressed or pulled out, keep clear of elevator and wiring to avoid injury and electrical shock.

17. Move the Main Switch to the ON position.
18. Press one Selection Button in the topmost, "A" Row of the Selection Assembly.
19. When the Elevator Tray comes to a stop immediately move the Main Switch to the OFF position.
20. With the Elevator raised, install eleven Screws and the Front Heat Exchanger Cover, removed in Step A-9. Three of these Screws, Part Number 9900-157, are included in the Kit. See Figure 2.

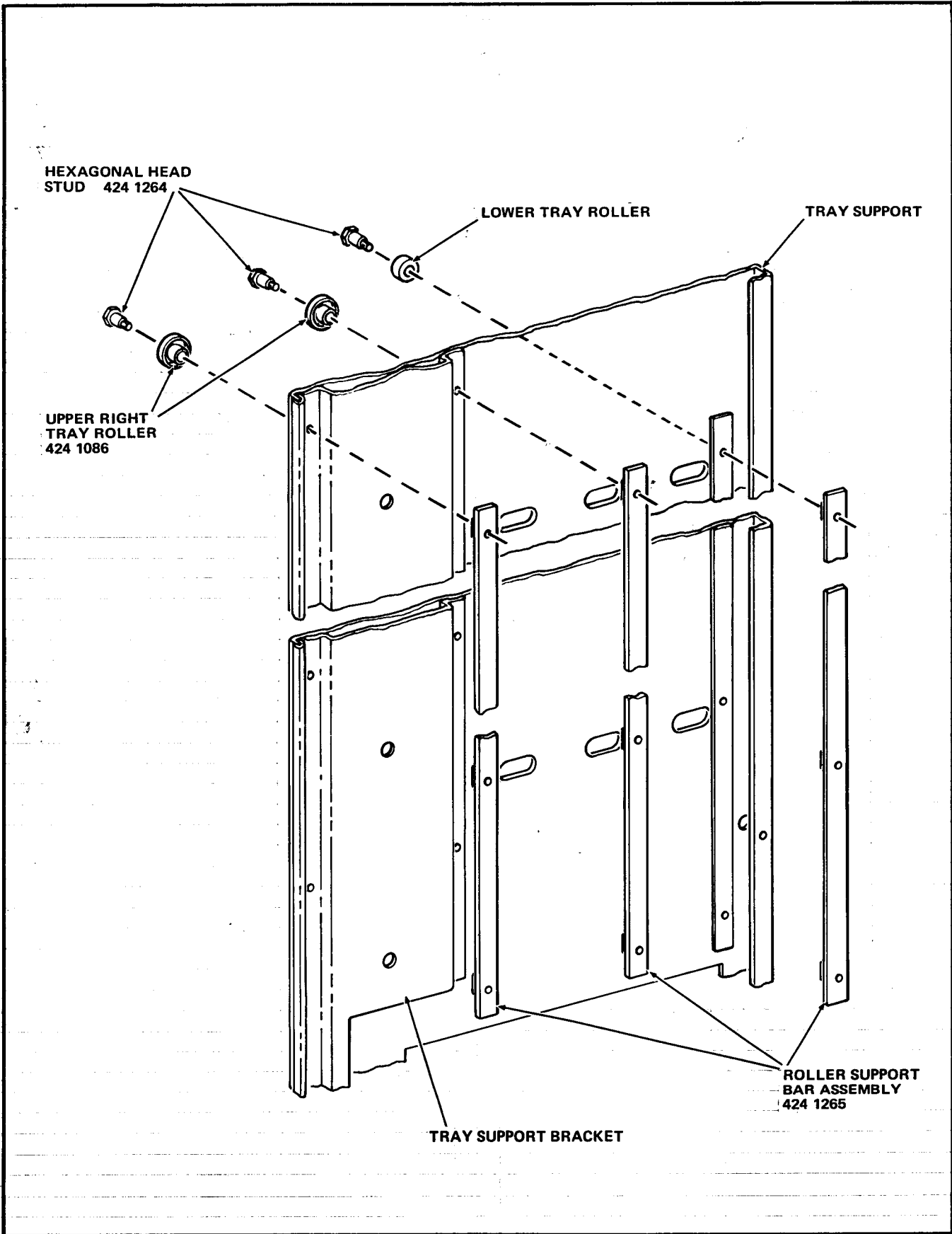


FIGURE 8

118 for L/R printer ply

Y⁴
Y⁵

21. Install the Movable Panel Assembly and four attaching Screws, removed in Step A-7 and A-8. Two of these Screws, Part Number 404-7054, are included in the Kit.

22. Return the Main Switch to the ON position.

23. Install the four Food Trays, removed in Step A-3.

24. Close the Display Door.

25. Close and lock the Monetary Compartment.

CAUTION

When replacing any of the Tray Rollers on either the Left or Right Tray Support Assembly, no more than one of the four vertically aligned Hexagonal Head Studs should be removed at once.
